

These particulars are set out as a general outline for the guidance of intending purchasers or lessees and do not constitute any part of an offer or contract. No person in the employment of the above named agents has any authority to make or give any representation or warranty whatsoever in relation to this property. If there is any point which is of particular interest, please contact our office and we will be pleased to check the information. The mention of any appliances and/or services does not imply they are in full and efficient working order.

www.woodlands-estates.co.uk

To view this property please call 01737 771777

England & Wales	
EU Directive 2002/91/EC	
Very energy efficient - lower running costs	(92 plus) A
	(81-91) B
	(69-80) C
	(55-68) D
	(39-54) E
	(21-38) F
Not energy efficient - higher running costs	(1-20) G
Current	71
Potential	74

propertymark

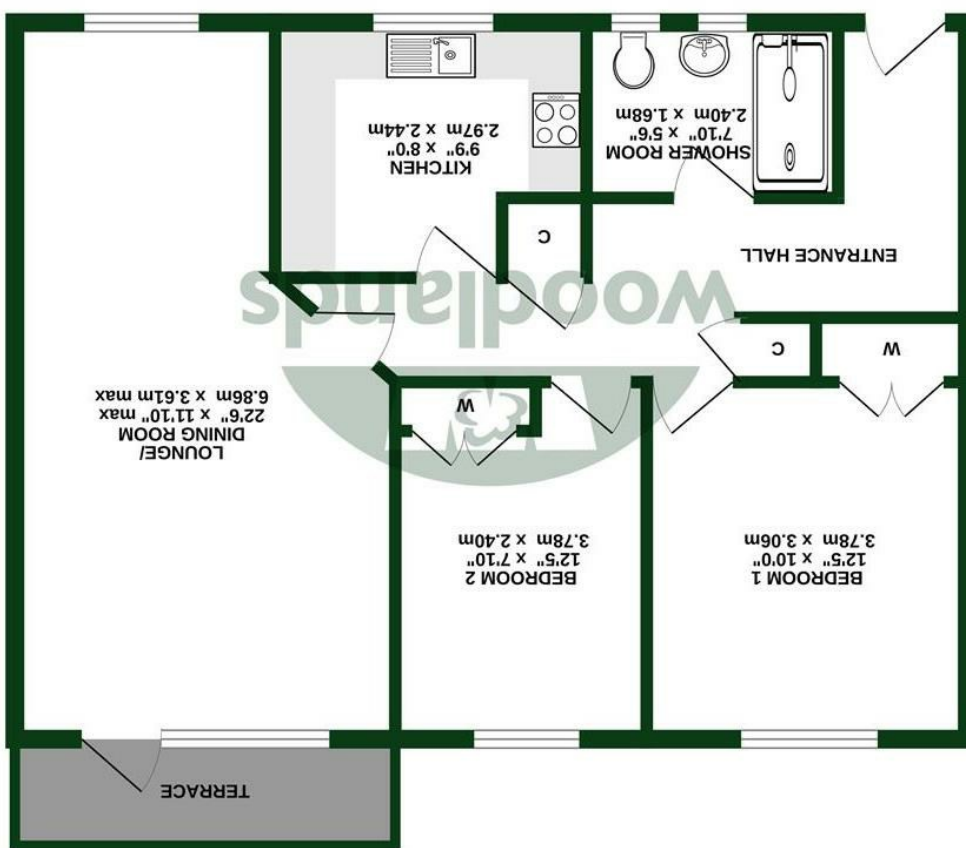


zoopla

rightmove

onTheMarket.com

woodlands



GROUND FLOOR (62.3 sq.m.) approx.
670 sq.ft. (62.3 sq.m.) approx.

TOTAL FLOOR AREA : 670 sq.ft. (62.3 sq.m.) approx.
What every agent has made to ensure the accuracy of the floorplan contained here, requirements of doors, windows and any other items are approximately as shown for any reason. The floorplan is for illustrative purposes only and should not be used as such by any prospective purchaser. The services, fixtures and appliances shown have not been tested and no guarantee as to their operation or efficiency can be given.
Made with Mapbox, ©2020



3 Pebworth Court, Ladbroke Road, Redhill, Surrey, RH1 1LE
£280,000
Leasehold

Ground floor apartment, close to Redhill town centre and station, with a private terrace, long lease and a garage.

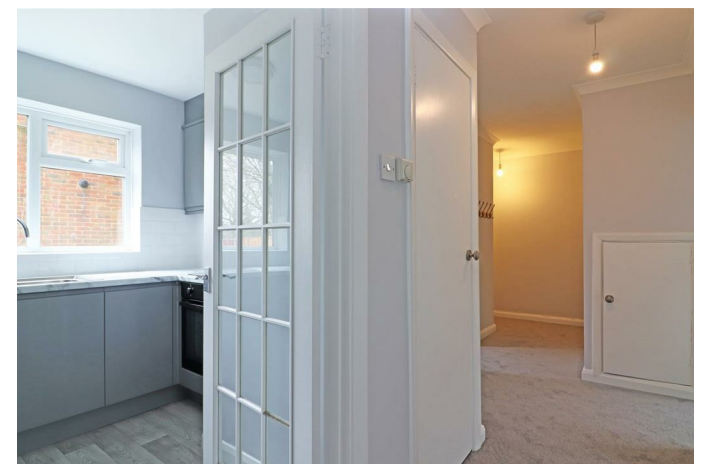
This spacious two bedroom property has a stylish, modern interior and is being sold with the benefit of no ongoing chain.

You have a good size entrance hall, with built in storage, two bedrooms, both of which have fitted storage and will accommodate a double bed, a newly fitted modern shower room with a new tiled floor, a separate newly fitted kitchen that overlooks the communal gardens, and a generous lounge/dining room with direct access to a west facing terrace. The property has been redecorated with new carpets throughout.

Outside there is communal parking, and a single garage en-block, as well as communal lawn gardens.

Redhill station is only a 5 minute walk, ideal for anyone seeking an easy commute to central London or a frequent flyer. Redhill's bustling town centre on your doorstep also means it's easy to enjoy the great range of new restaurants, multi screen cinema complex, and weekly local market.

- GROUND FLOOR APARTMENT
- TWO BEDROOMS
- MODERN INTERIOR
- GARAGE EN BLOCK
- COUNCIL TAX BAND: C
- NO CHAIN
- PRIVATE TERRACE
- AMPLE STORAGE
- EXCELLENT LOCATION
- EPC RATING: C



ROOM DIMENSIONS:

ENTRANCE HALL
17'8(max) x 5'10 (5.38m(max) x 1.78m)

LOUNGE
22'6 x 11'10 (6.86m x 3.61m)

KITCHEN
9'9 x 8'0 (2.97m x 2.44m)

BEDROOM ONE
12'5 x 10'0 (3.78m x 3.05m)

BEDROOM TWO
12'5 x 7'10 (3.78m x 2.39m)

SHOWER ROOM
7'10 x 5'6 (2.39m x 1.68m)

GAS CENTRAL HEATING

DOUBLE GLAZED WINDOWS

EN BLOCK GARAGE

COMMUNAL PARKING

COMMUNAL GARDENS

YEARS REMAINING ON LEASE: 939

GROUND RENT: £18 per annum

SERVICE CHARGES: £1,200 per annum

